



## TYL<sup>®</sup> - High Rib F

High Steel Ribbed Formwork

202402

### DESCRIPTION

Conventional joints require the removal of temporary timber joints and chiseling, hacking or other means to roughen the poured surfaces in preparation for subsequent pours. This could result in the weakening or cracking of joints, a lack of uniformity in bonding strength and even an inherently weak structure. High steel ribbed has integral V-shaped ribs to provide added

rigidity and form a permanent shuttering for construction joints. It is manufactured from galvanized steel sheet to BSEN10327:2004.



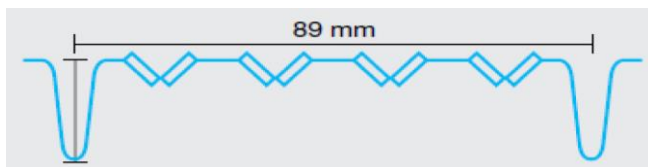
### SPECIFICATION COMPLIANCE

- BSEN10327:2004

### PHYSICAL & MECHANICAL

#### PROPERTIES

Code:	2812
Weight:	3.39kg/m <sup>2</sup>
Sheet size:	445mm x 2000mm



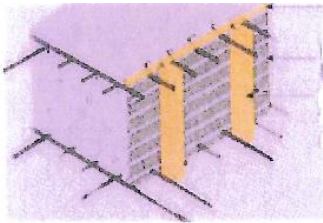
### ADVANTAGES

- The perfect joint between the concreted sections without needing to further process the construction joint.
- Reduction of the concrete pressure during the concreting process.
- Minimization of empty spaces and cement honeycomb.
- High concreting speed and visual monitoring of the concreting process is possible.

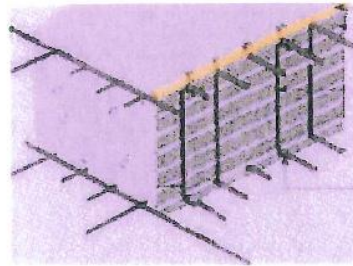
### USES

- As permanent formwork for construction joints
- As permanent formwork for flat, even or shaped components

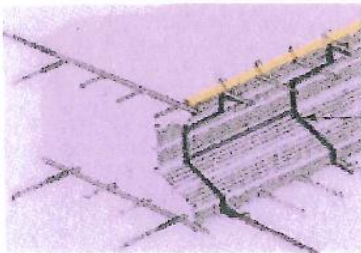
### APPLICATION INSTRUCTIONS



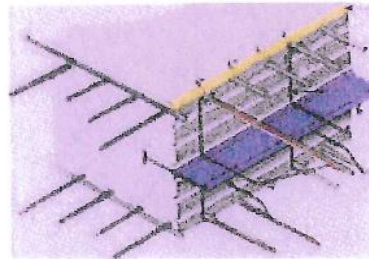
Standard joint with timber supports



Standard joint with re-bar supports



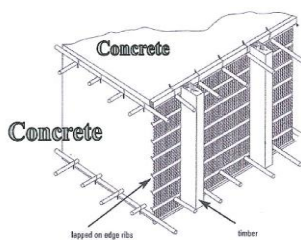
Toggle Joint with re-bar supports



Joint with PVC waterstop with re-bar supports

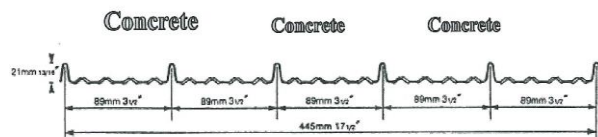
#### Installation of high steel ribbed

The high steel ribbed sheet is used with the ribs embedded into the concrete.



#### Recommended Spacing of Vertical Supports

Depth of pour (metres)	Horizontal Spacing of vertical supports (metres)
0.25	0.90
0.50	0.70
1.00	0.50
1.50	0.40
2.00	0.35
3.00	0.30



### **Please enquire about our range of construction product**

The information and the recommendations relating to the application and end use of this product are given in good faith and are based on the information provided by the manufacturer of the product and/or the Company's current knowledge and experience in connection with the product when properly stored, handled and applied under normal conditions and no liability for final function at the job site is assumed. In practice, the differences in materials, substrates and actual site conditions are such that no warranty in respect of merchantability or fitness for a particular purpose, nor any liability arising out of any legal relationship whatsoever, can be inferred either from this information, or from any written and/or oral recommendations, or from any other advice offered by the Company. No responsibility or Liability by the Company will be accepted for misuse, misreading or derivation from the recommended guidelines in respect of this product and the user shall determine the suitability of the product for his intended use and all risks and liability in connection therewith. The information contained in this brochure may change at any time without notice.